





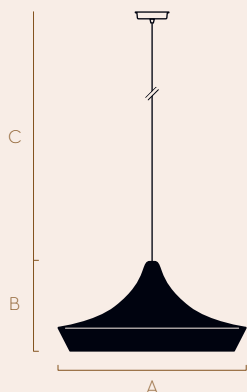
CAVE, plain finish in Deepsea

LIGHT/SHADE collection

## CAVE

NP20-1

A versatile direct overhead light. Gracefully concise, CAVE focuses light in a single space.



	A	B	C (mm)
1 ply	Ø 400	180	1000
1 ply	Ø 500	240	1000
1 ply	Ø 600	300	1000

### Available colour finishes

• Plain • Inside edge colour

### Bulb fitting type and recommended bulb

Ø400, Ø500: E14, max 11w bulb LED

Ø600: E27, max 11w bulb LED

Please note due to the hand crafted nature of our pendants height dimensions are variable.

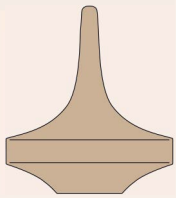
# NAOMI PAUL

+44 20 8556 8387  
studio@naomipaul.co.uk

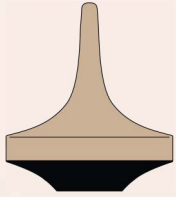
# FINISH & OPTIONS

## COLOUR COMBINATIONS

We are happy to consult on colour and combination options, please do not hesitate to get in touch.



**Plain**  
Available for all products.



**Two tone**  
Lower section under frame in 2nd colour  
Available for: GLÜCK, MONIKA, SONNE  
and SSO4.



**Inside edge colour**  
Available for: CAVE, CWAL, CWAS,  
VEX and V2 GLÜCK

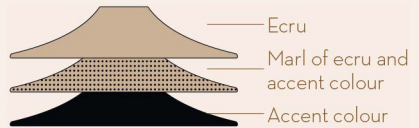


**Trim**  
Available for: SSO1, SSO1 WAL,  
SSO1 WAS, SSO2, SSO3, SSO5,  
and SS TABLE LIGHT.



**50/50**  
This vertical colour split has a striking  
but simple finish created using  
a complex technique developed  
by Naomi Paul Studio.

Available for: SSO1, SSO1 WAL,  
SSO1 WAS, SSO2, SSO3, SSO5,  
and SS TABLE LIGHT.



**Ombré**  
Always Ecrú based with x 1 accent colour.

Available for: SSO3, SSO5 and  
SS TABLE LIGHT.

Marl is a mottled yarn made with Ecrú  
and an accent colour



FINISH & OPTIONS



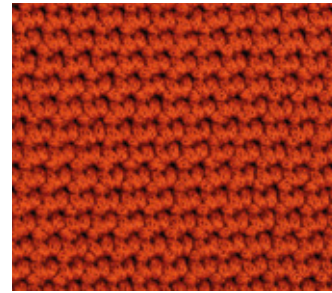
White



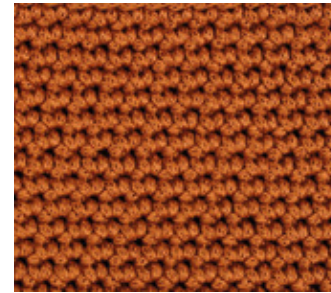
Pale Grey



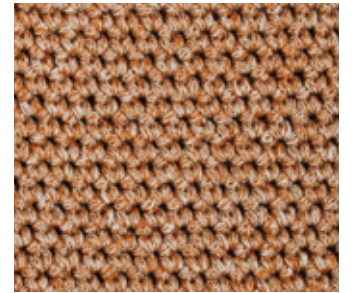
Black



Lava



Rust



Rust-Ecru Marl



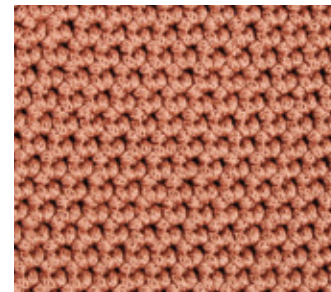
Ecru



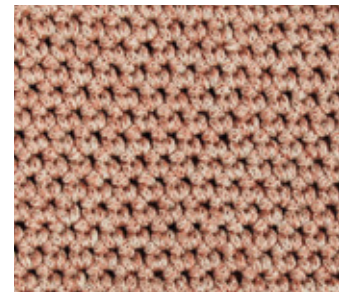
Putty



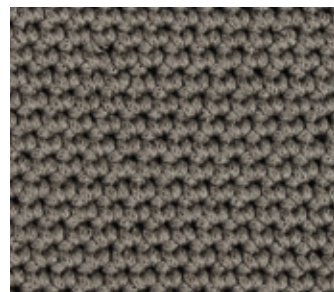
Putty-Ecru Marl



Dusky Pink



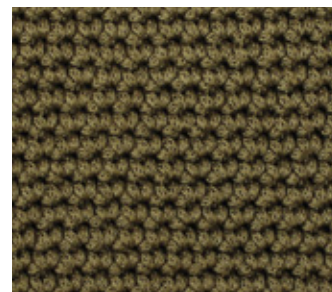
Dusky Pink-Ecru Marl



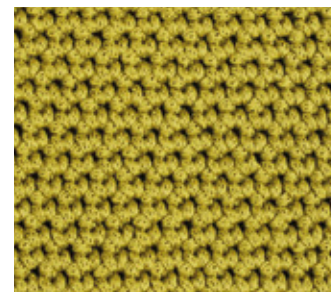
Down Grey



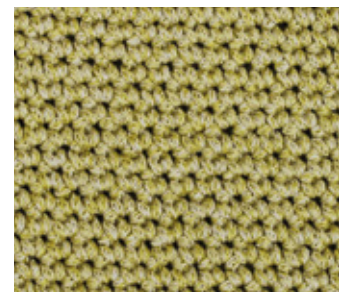
Down Grey-Ecru Marl



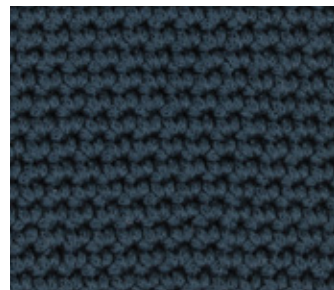
Olive



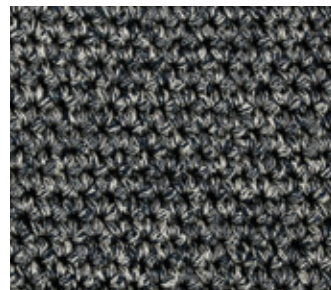
Greengold



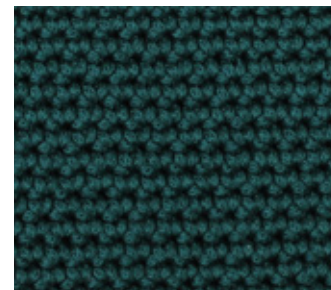
Greengold-Ecru Marl



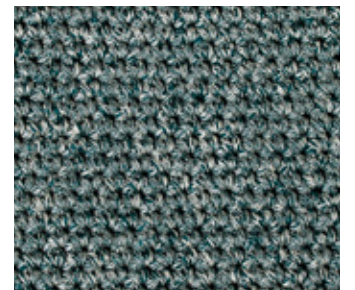
Deepsea



Deepsea-Ecru Marl



Alpine



Alpine-Ecru Marl



# NAOMI PAUL

---

3 CORE TRIPLE INSULATED BRAIDED  
ROUND CABLE

## CABLE COLOUR OPTIONS

---

Each pendant & lighting design is supplied with one meter of braided cable, made in Northern Ireland. Custom lengths can be supplied on request.

---

SELECT YOUR CABLE COLOR CHOICE:

NAVY | OLIVE | GREY | BRASS | NUT | IVORY | WHITE



\*US UL certified option available.  
Please note colors may vary for US versions