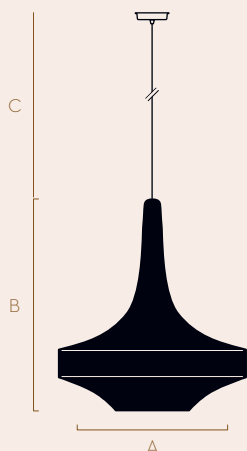




GLÜCK, plain finish in Dusky Pink

OMI collection
GLÜCK

A versatile diffused atmospheric light. In its smallest size, GLÜCK is a pendant perfect for intimate environments. In its largest size GLÜCK is a statement pendant. Single or clustered, GLÜCK is equally at home in a kitchen or cascading down a stairwell.



	A	B	C (mm)
1 ply	Ø 500	550	1000
1 ply	Ø 600	700	1000
3 ply	Ø 800	900	1000

Available colour finishes

• Plain • Two tone

Bulb fitting type and recommended bulb

Ø 500: E14, max 11w bulb LED

Ø 600, Ø 800: E27, max 11w bulb LED

Please note due to the hand crafted nature of our pendants height dimensions are variable.

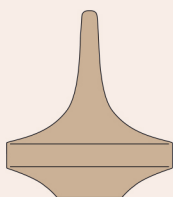
NAOMI PAUL

+44 20 8556 8387
studio@naomipaul.co.uk

FINISH & OPTIONS

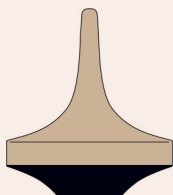
COLOUR COMBINATIONS

We are happy to consult on colour and combination options, please do not hesitate to get in touch.



Plain

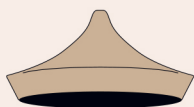
Available for all products.



Two tone

Lower section under frame in 2nd colour

Available for: GLÜCK, MONIKA, SONNE and SSO4.



Inside edge colour

Available for: CAVE, CWAL, CWAS, VEX and V2 GLÜCK



Trim

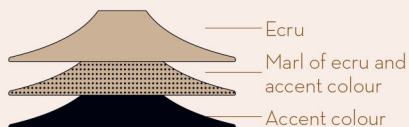
Available for: SSO1, SSO1 WAL, SSO1 WAS, SSO2, SSO3, SSO5, and SS TABLE LIGHT.



50/50

This vertical colour split has a striking but simple finish created using a complex technique developed by Naomi Paul Studio.

Available for: SSO1, SSO1 WAL, SSO1 WAS, SSO2, SSO3, SSO5, and SS TABLE LIGHT.



Ombré

Always Ecrú based with x 1 accent colour.

Available for: SSO3, SSO5 and SS TABLE LIGHT.

Marl is a mottled yarn made with Ecrú and an accent colour

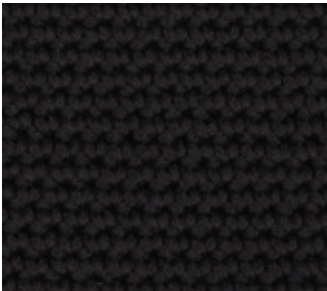
FINISH & OPTIONS



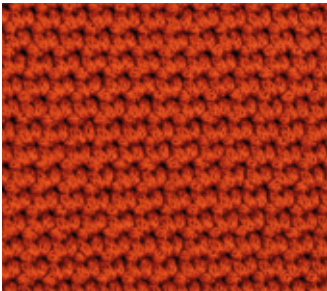
White



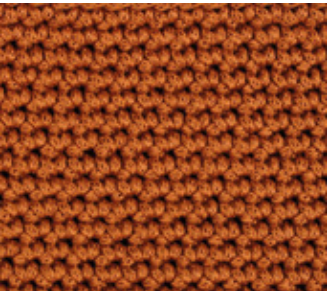
Pale Grey



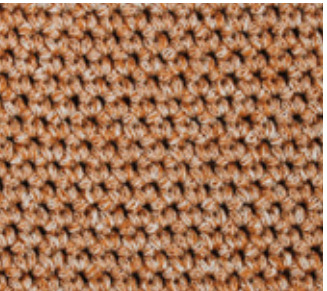
Black



Lava



Rust



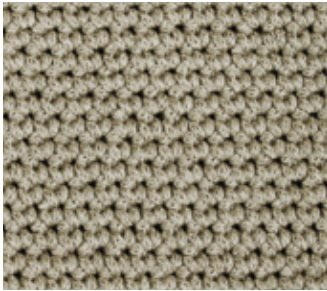
Rust-Ecru Marl



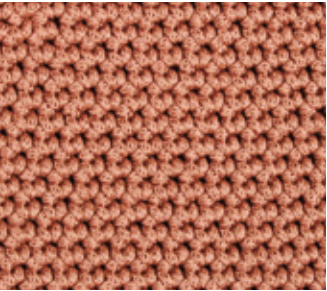
Ecru



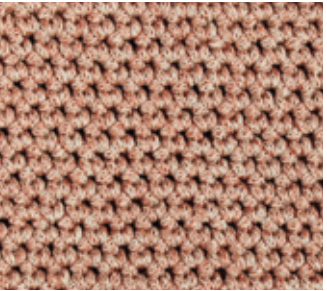
Putty



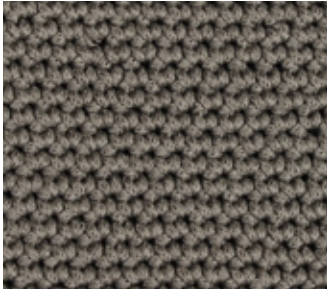
Putty-Ecru Marl



Dusky Pink



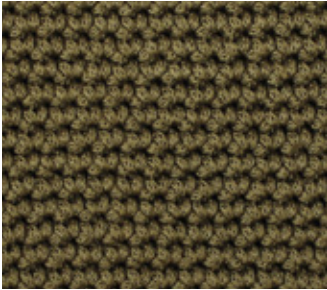
Dusky Pink-Ecru Marl



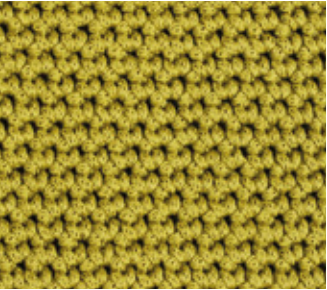
Down Grey



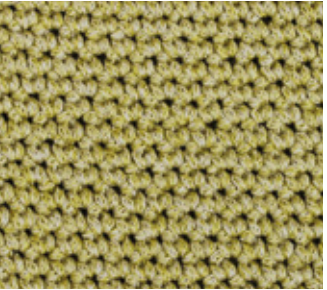
Down Grey-Ecru Marl



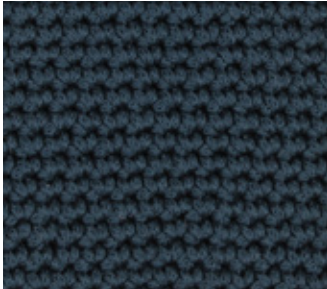
Olive



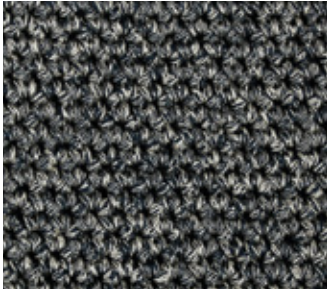
Greengold



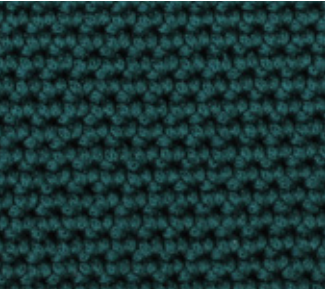
Greengold-Ecru Marl



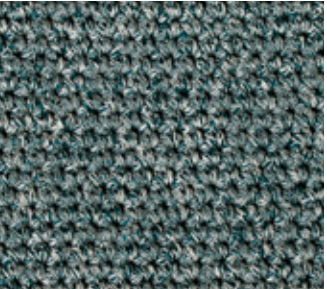
Deepsea



Deepsea-Ecru Marl



Alpine



Alpine-Ecru Marl

METALWORK FINISH OPTIONS

PENDANT FRAME

We use fine wire ring frames to tension our hand crocheted pendant and shade fabric into shape. The metal frames are crocheted into the body of the fabric, making the metalwork just visible between the stitches on the outer rim of the pendant.

Each wire frame is bent by hand into a ring, soldered and polished before being electroplated in our standard finish Rich Gold. We use this finish as it does not require additional lacquering but works well with other brass components.

Custom finishes are also available on request, please select from the options below:

PENDANT FRAMEWORK

Our standard finish

☐

LACQUERED BRASS

Custom finish options (matt lacquer used as standard)

☐

*LACQUERED COPPER

☐

*LACQUERED NICKEL

☐

*POWDER COAT (please confirm RAL code)

☐

*LACQUERED IZE BLACK

☐

*BRONZE

(OPTIONAL) BRASS SUSPENSION ROD

Our standard finish

☐

UNTREATED POLISHED BRASS

Custom finish options (matt lacquer used as standard)

☐

*LACQUERED BRASS

☐

*LACQUERED COPPER

☐

*LACQUERED NICKEL

☐

*POWDER COAT (please confirm RAL code)

☐

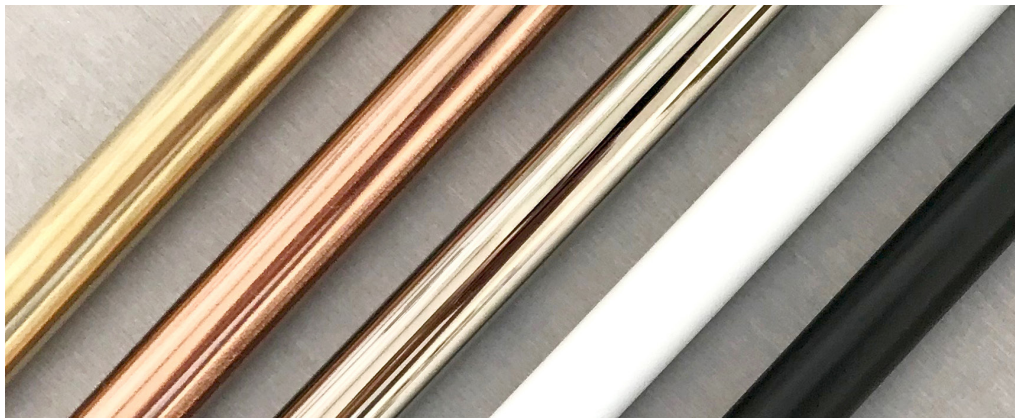
*LACQUERED IZE BLACK

☐

*BRONZE

Left to right:

LACQUERED BRASS | LACQUERED COPPER | LACQUERED NICKEL |
POWDER COAT (EXAMPL, 9010 PURE WHITE MATT) | LACQUERED IZE BACK



NAOMI PAUL

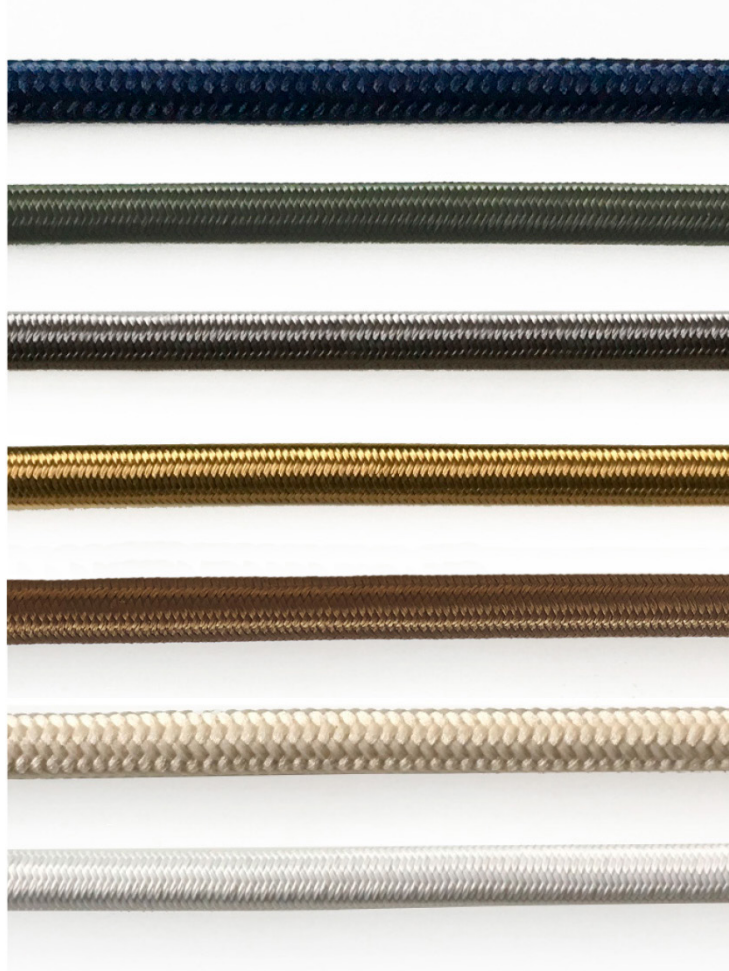
3 CORE TRIPLE INSULATED BRAIDED
ROUND CABLE

CABLE COLOUR OPTIONS

Each pendant & lighting design is supplied with one meter of braided cable, made in Northern Ireland.
Custom lengths can be supplied on request.

SELECT YOUR CABLE COLOR CHOICE:

NAVY | OLIVE | GREY | BRASS | NUT | IVORY | WHITE



*US UL certified option available.
Please note colors may vary for US versions